

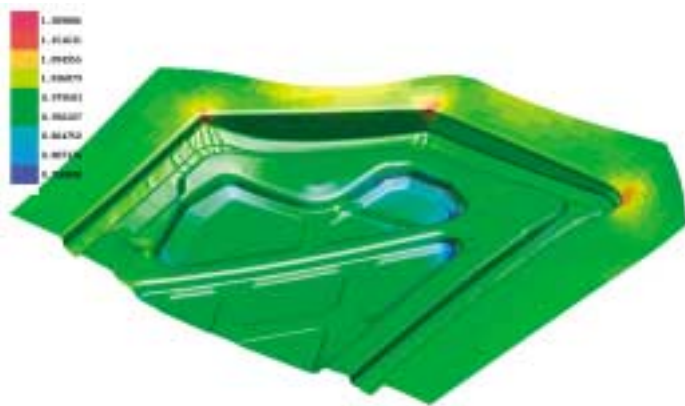
Applied simulation for aluminium manufacturer Alcan

Applied Computing & Engineering Ltd has won a contract to supply a fully configured multiprocessor sgi Origin 3200 server to aluminium manufacturer Alcan, in a contract worth close to £200,000.

Alcan is one of the world's largest aluminium and packaging companies. The computer will be used at the company's research laboratories in Oxfordshire to perform mathematical modelling simulations of aluminium processes and products.

"We work closely with automotive customers on maximising the benefit of aluminium in vehicle structure, relating to vehicle safety, comfort and performance. Use of computer simulation enables us to identify the most suitable combination of alloys, material forms and joining techniques that meets today's high standards of vehicle performance requirements. This approach significantly reduces the time it takes to design an aluminium-intensive vehicle and ensures that the amount of expensive full-scale tests is minimised." said Dr. Dubravko Nardini, senior consulting engineer at Alcan.

Dr Nardini explained the decision to select Applied Computing & Engineering (ACEL) to supply the sgi equipment. "As a supplier and a user of simulation software they have key understanding of the importance of system configuration and load balancing for maximising the overall performance as well as the ability to supply high performance sgi equipment at a competitive price."



Article 07

News and Events in brief

FIELDVIEW 8 preview at QinetiQ. Intelligent Light's founder and general manager Steve Legensky joined Applied Computing & Engineering at QinetiQ recently to introduce the latest release of FIELDVIEW - the leading software for CFD visualisation. The software allows users to extract more quantitative analysis results combined with its established ease of use.

For the third successive year, Applied Computing & Engineering is a key sponsor of the UK Design Optimisation Group (Association for Structural and Multidisciplinary Optimization / International Society of Structural and Multidisciplinary Optimization) meeting in Newcastle-upon-Tyne on 4-5 July. For more details of the meeting visit: <http://www.mech-eng.leeds.ac.uk/menomq/asmouk/>

In pole position at the recent launches of new Formula 1 cars from Renault and Sauber was CFD (Analytical Methods Inc's VSAERO) and inspection (Silma's CimStation) simulation software.

Applied Computing & Engineering recently joined leading European satellite and telecommunications company Astrium and precision engineering contract manufacturer Verdict Aerospace Components at a Best Practice in the Space Industry workshop devoted to demonstrating digital manufacturing in the aerospace industry. For more details of the workshop visit www.ace1.co.uk

Article 08

Responding to simulation skills shortage

According to research published by Reed, over two thirds of British firms are experiencing skills shortages. And hardest hit is manufacturing companies facing shortages of staff with technical and engineering skills. 20% of employers who have experienced difficulties recruiting skilled staff highlight technical and engineering vacancies as being particularly difficult to fill.

Applied Computing & Engineering has responded to the skills shortage by strengthening its recruitment business. Steve Attwood has joined to head the Recruitment Services group. With over twenty years experience in FEA, Steve is well qualified to assess a customer's requirements and candidates abilities. He has worked in a number of roles including analyst,

support engineer, sales/marketing function and management.

One of Steve's first initiatives has been to expand the Applied Computing and Engineering web site to include an on-line service where companies can register their projects in confidence. Applied Computing will then match their requirements with an extensive database of candidates suitable for both permanent and contract requirements. "The whole process is underpinned by our extensive knowledge of simulation technology and industry contacts, so we're in an ideal position to assess a candidate's suitability. This enables us to react quickly to customers' requirements and results in an improved service to simulation companies," says Steve Attwood.

Article 09