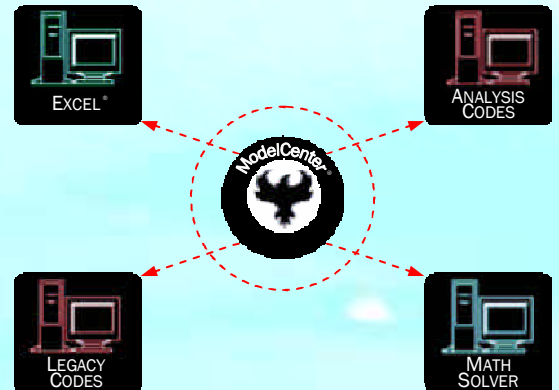


ModelCenter provides a highly visual environment for process integration and design optimisation. You can quickly create an automated process and then perform complex design exploration techniques to find the best design or solution.

ModelCenter® Benefits

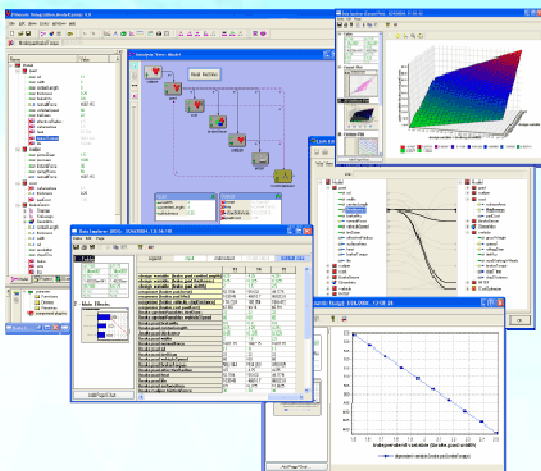
- Reduces **errors**
- Saves **time**
- Better **designs**
- Easy to **deploy**
- Cohesive **team** environment



Available in node-locked and floating licenses, ModelCenter® is compatible with Windows NT, 2000 and XP.

Integration Features

- Plug-Ins for directly **integrating COTS** applications
- Direct access to **Analysis Server** to integrate wrapped codes
- **Link Editor** for creating and editing the links between components



Trade Study Features

- **Carpet Plot Tool**
- **DOE Tool**
- **Parametric Study Tool**
- **Design Optimisation Tools**

Reporting Features

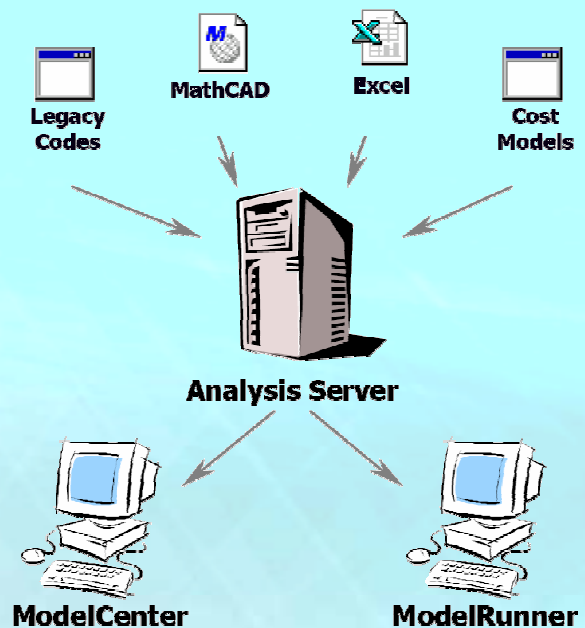
- Project allows you to easily save and access your **Models and trade studies**
- Report Generator creates **detailed statements** on the variables, components and geometry of your Models
- Data Explorer displays **trade study** data in tables and charts that can be exported

Integrating your Design & Analysis Software

Analysis Server allows you to "wrap" or convert your design and analysis software, into reusable components that can be directly accessed within ModelCenter®. These components become the building blocks for process integration. Analysis Server is a flexible, Java-based software server that allows you to host hundreds of wrapped applications for your integrated engineering processes. Once published, anyone on your team can access these components from any computer on the network, regardless of the platform type.

Analysis Server Benefits

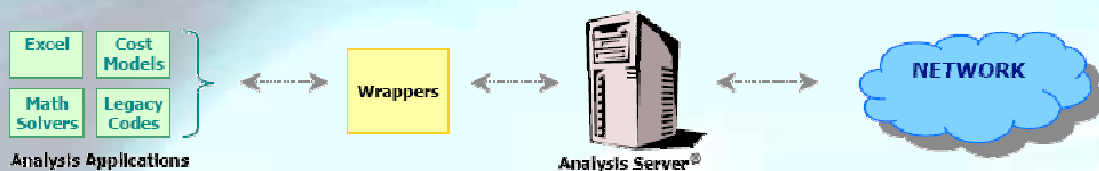
- Application **integration** in a client/server model
- **Easy** to use
- **Distributed** access
- Platform and application **flexibility**



Available in both node-locked and floating licenses, Analysis Server can be installed on Windows, HP, SGI, Sun, Linux and any other platform (requires Java 2 Platform).

What is a Wrapper?

Analysis Server provides generic access and control for components through a technique known as software wrapping. A wrapper is a software adapter that converts input and output data for your application into a standard format that can be linked to other applications. This linking is done with ModelCenter®, a process integration engine. The flexibility of software wrapping allows Analysis Server to present legacy software as a set of simple to-use components instead of a complex, monolithic program.



Security Package

The Security Package includes authentication and encryption features that enable you to access wrapped analysis codes in your organization securely across the Internet. Data connections are encrypted with Secure Socket Layers (SSL) to allow geographically separated groups to work together securely. The authentication feature also requires users to log in before gaining access, providing control over who is given the right to view and run codes.

APPLIED COMPUTING & ENGINEERING Ltd

Design & Manufacturing Simulation

International Headquarters

The Genesis Centre
Birchwood
Warrington
Cheshire
UK
WA3 7BH

Tel: +44 (0) 1925 830 085
Fax: +44 (0) 1925 826 460
info@acel.co.uk
www.acel.co.uk

USA Office

3200 Kanawha Turnpike
Building 701
South Charleston
Kanawha County
West Virginia 25303
USA